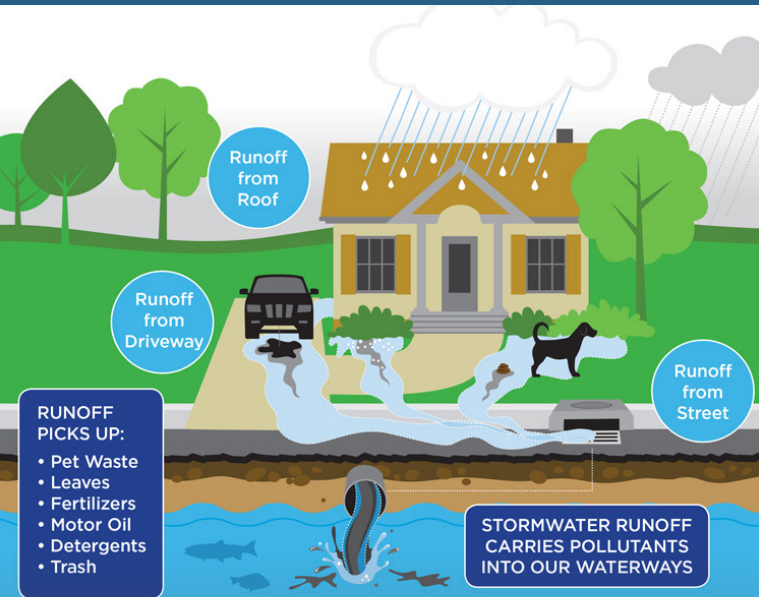
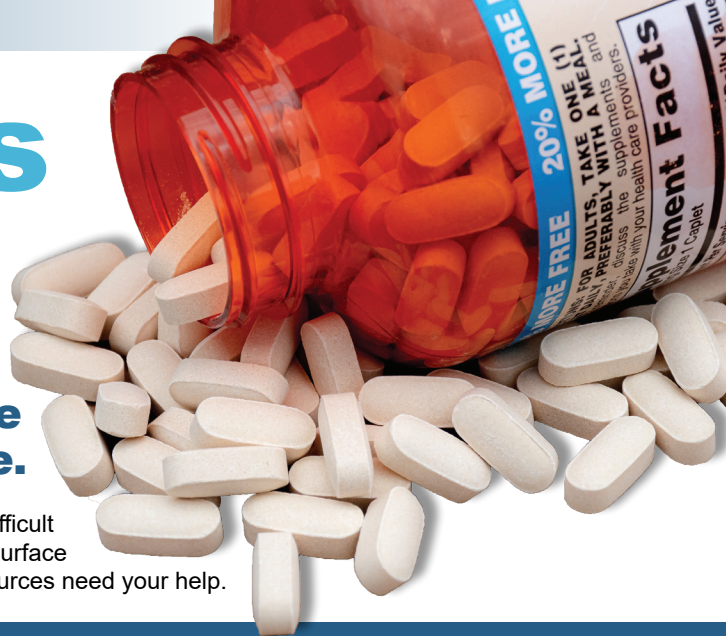


CLEAN UP YOUR Cabinets CLEAN UP YOUR Water

A Message from the Berks County MS4 Steering Committee and the Council of Chemical Abuse.

Pharmaceuticals can impact the quality of your drinking water. It can be very difficult to remove even trace amounts of pharmaceuticals from groundwater or surface sources. To maintain a clean, dependable water supply, your water resources need your help.



Stormwater is water from precipitation that flows across the ground and pavement when it rains or when snow and ice melt. The water seeps into the ground or drains into what we call storm sewers. These are the drains you see at street corners or at low points on the sides of streets.

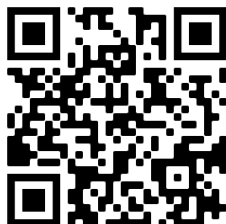
Storm water becomes a problem when it picks up debris, chemicals, dirt, and other pollutants as it flows or when it causes flooding and erosion of streambanks. Stormwater travels through a system of pipes and roadside ditches that make up storm sewer systems. It eventually flows directly to a lake, river, stream, wetland, or coastal water. All of the pollutants stormwater carries along the way empty into our waters, too, because storm water does not get treated!

Proper Disposal of Pharmaceuticals

- A few small steps can make a huge impact in safeguarding the environment and improving the water quality.
- Do not flush unwanted or leftover medications down the toilet or sink drain. They may affect groundwater and private drinking water wells.
- Never give your unwanted medicine to someone else. Having unwanted medications around the home presents a danger to children, guests, and pets that could accidentally ingest them.
- Take advantage of the community pharmaceutical take-back programs available in Berks County that allow the public to bring unused drugs to various locations for proper disposal. Visit the Berks County Solid Waste Authority website below for additional information on collection events and dropoff points in your neighborhood.

Steps to help us protect our water resources

- Minimize the use of pesticides and herbicides on your lawn & garden.
- Do not dump swimming pool water into creek or storm drain at the end of the season. If possible, direct the water into the sanitary sewer. Otherwise, wait until the chlorine diminishes and then direct the water into grass, forest, or other natural areas.
- Bring household hazardous waste - such as paint, varnishes, and other chemicals to recycling facilities. Check the Berks County Solid Waste Authority website for details at <http://www.co.berks.pa.us/swa>
- Dispose of motor oil at a garage that will recycle it. Never pour oil on the ground or in a storm drain or sewer on the street.
- Pick up after pets and dispose of their waste properly. No matter where pets make a mess-in a backyard or at the park-storm water runoff can carry pet waste from the land to the storm sewer system to a stream.
- Store materials that could pollute storm water indoors and use containers for outdoor storage that do not rust or leak to eliminate exposure of materials to storm water.



For more information on the proper disposal of pharmaceuticals:

Berks County Solid Waste Authority
610.478.6362 • www.co.berks.pa.us/swa

Berks County Community Drop-Box Program

"Take Back Your Meds" Program

This brochure had been funded by the League of Women Voters of Pennsylvania Department of Environmental Protection for Drinking Source Water Protection administered by the US Environmental Protection Agency.